



www.skylight-blinds-direct.co.uk
Tel: 0800 008 6293 : Email: team@skylight-blinds-direct



THE EASY TO FIT, MANUALLY OPERATED DIY ROOF ROLLER BLIND

Thank you for your interest in our **SkyFit™** roof Roller Blinds.

The **SkyFit™** roof blind can be made in sizes up to 1.5m wide x 1.5m long and is a fantastic solution for small flat roof or sloping roof windows. Fitted on the edge of your reveal and available in both blackout and antiglare fabrics in a range of colours, opacities and hardware options. The **SkyFit™** blind blends in seamlessly with your ceiling to provide a sleek and sophisticated look to any suitable roof window in the home.

- Made to measure in the UK
- Sizes up to 1.5m wide x 1.5m long
- Easy to Measure, Easy to Fit
- Custom made side rails and bottom seal
- Child safe & chain free
- Spring operated mechanism.
- High quality THERMAL blackout or anti-glare fabrics
- 3-year guarantee [on fixtures]

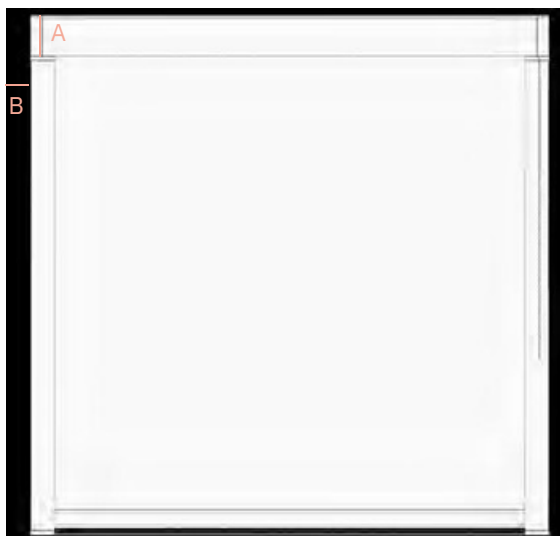


The SkyFit™ blind is capable of blocking light and draughts thanks to the exceptional quality of its individual components.

Each part, from the brush seals to the cassette holder and aluminium frames are designed to last. They come in white and silver to suit a variety of environments and tastes.

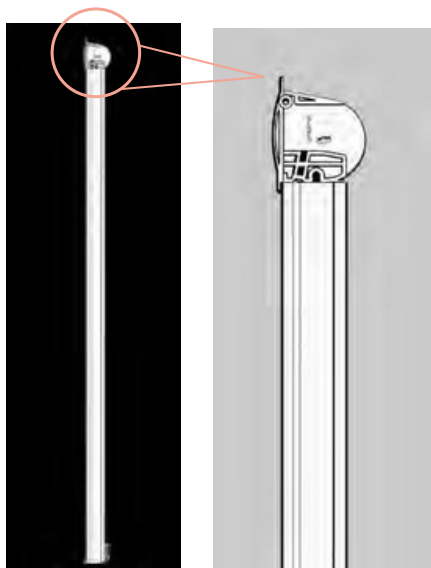
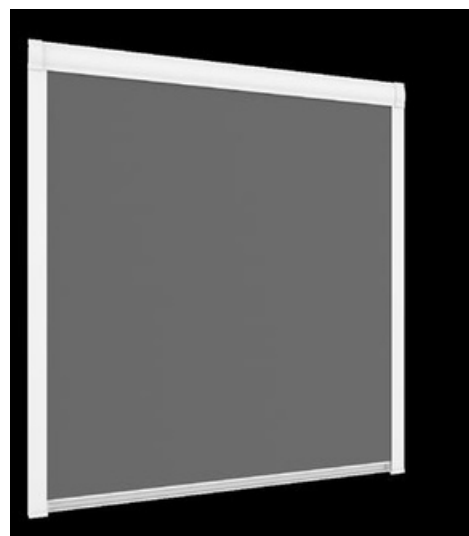
Fabrics are available in translucent light filtering and blackout in a wide range of colours.

Product Dimensions



PRODUCT SIZE LIMITS

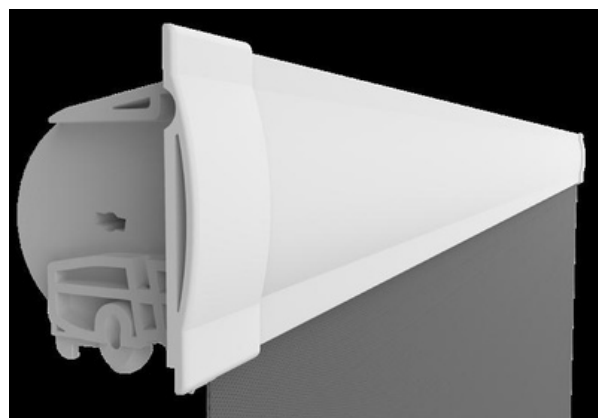
Min width: 400mm
Max width: 1500mm
Min drop: 400mm
Max drop: 1500mm



Cassette Height: 60mm
Cassette Width: 32mm
Cassette Depth: 52mm

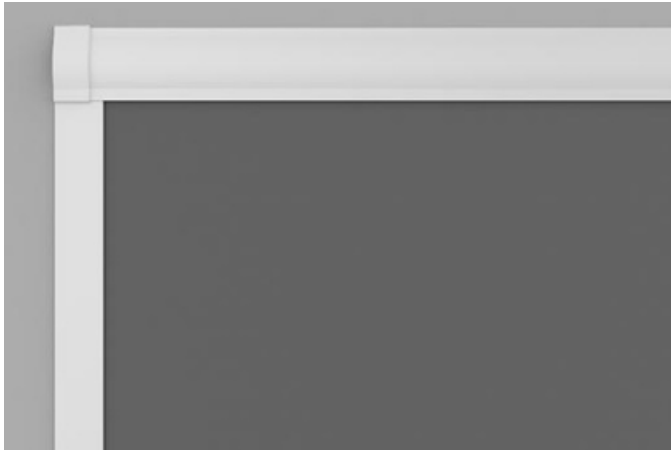
Cassette

The fabric which is around the spring and barrel mechanism is completely enclosed, the siderails slot into cassette ends on installation.



SkyFit™ Blind Features

SkyFit™ blinds incorporate a number of specially developed features that enhance the premium quality of our blinds.



Aluminium Colour Options

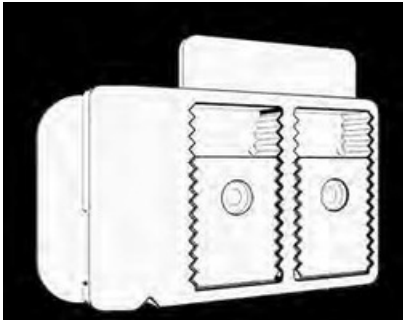


White
Matt finish



Anodised Silver
Natural Finish

Fixing Brackets

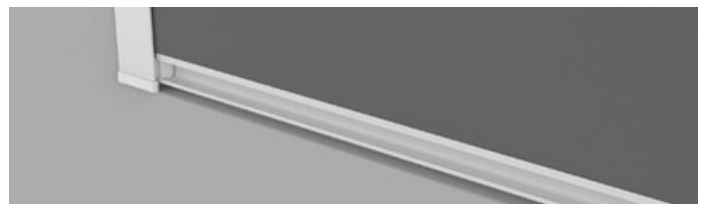


Child Safe

The SkyFit™ blind is operated via a spring system. The blind pulls down through the siderails locking in place when the handle is released. The handle is then pushed in towards the window releasing the lock which enables the spring to retract the fabric. It is totally cord free.

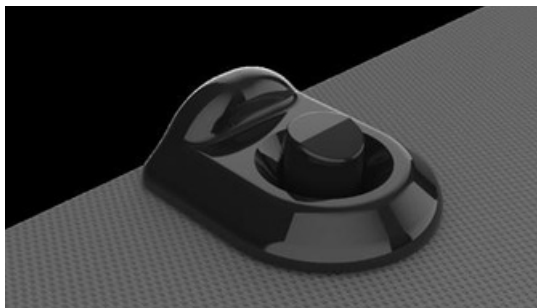
Seal

Brush and rubber seals are attached to the bottom of the handle, when the blind is closed, they create a barrier between the blind and sill, blocking out light and reducing heat loss.



Pips

Pips are attached to the fabric to ensure the blinds stays securely within the runners at all times.

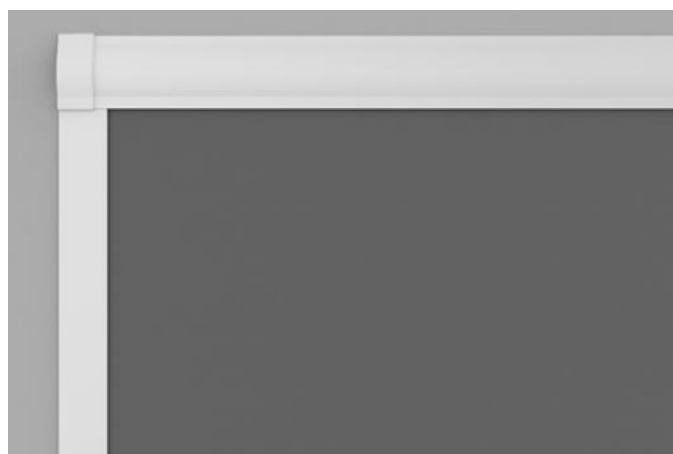


Brush Seals

These create a barrier between the blind and the window frame, blocking out light and reducing heat loss.



Edge of Recess Fitting - ✓ Drill Free Installation










Fabric Colour Options

Blackout

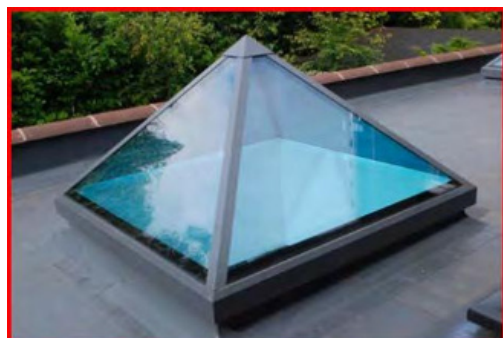
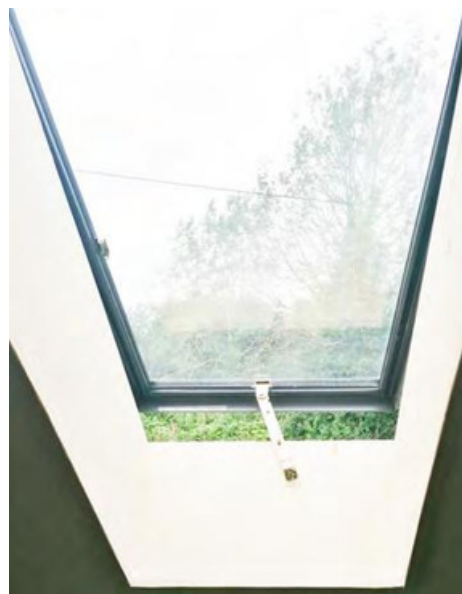
	Ice White		Baby Pink
	Cream		Dusky Blue
	Hessian		Navy
	Charcoal Grey		Leaf Green
	Light Grey		Kiwi
	Black		

Translucent

	Bright White		Red
	Delicate Cream		
	Hopsack		
	Clay		
	Pale Grey		
	Rock Grey		

Examples of Suitable Windows

For both horizontal and sloping roof windows the SkyFit™ blind sits at the edge of the recess. For sloping roof windows such as conservation windows you must ensure that the handle of the window does not protrude past the window recess.



Examples of Windows that are not suitable

For both horizontal and sloping roof windows the SkyFit™ blind sits at the edge of the recess. For sloping roof windows such as conservation windows you must ensure that the handle of the window does not protrude past the window recess. You must take into account the dimensions of the blind to make sure the edge of your recess can accommodate it. eg see below an example of a recess that is not suitable as there is a lip at the bottom which is not deep enough to accommodate the 52mm cassette depth. Also watch out for sloping upstands which are less than 90 degrees as the diagonal will obstruct the cassette of the blind. see product dimensions.



Operation

The blind is operated via a spring tension system using the handle at the bottom of the blind. The blind simply pulls down through the siderails locking whenever the handle is released, the handle is then pushed in towards the window releasing the lock which enables the cassette to retract the fabric.

If you can reach the ceiling you can operate the blind with your hand, if not, the SkyFit™ blind comes with a FREE 1m-2m telescopic pole. Additional poles are £30 each.



Maintenance

All our products are manufactured using aluminium and glass reinforced nylon components, they do not present any corrosion problems in normal working environments. If there is a failure of a blind, a component can be replaced without the need for a new complete blind.

Replaceable components:

Handle ends (brakes)
Siderail feet
Siderails.

Care

To keep the blind looking it's best through time the customer must ensure the product has been installed and operated securely and correctly, the fabric can be cleaned with a synthetic or feather duster and can be wiped lightly with a damp cloth.

SkyFIT™ Manual Measuring Instructions

[Link to measuring video](#)

SkyFIT™ manual blinds are designed to fit at the **bottom edge of the recess** of your roof space where the **upstand meets the ceiling**.

YOU MUST MAKE SURE THERE IS ROOM FOR THE BLIND AT THE EDGE OF YOUR RECESS (SEE PRODUCT DIMENSIONS GUIDE & PAGE IN THIS BROCHURE). Make sure the back of the cassette which is 52mm has clearance and there is clearance underneath for the lips of the blind which fit over the edge of the recess.

Measure the **width in 3 places at the bottom edge of the recess**.

We assume that **width 1** is where you are going to fit the **head** of the blind.

Width 2 is the middle of the recess and **width 3 is the foot of the recess**.

Ideally there should not be more than 6mm difference between width 1 and width 2.

Also measure the length in 3 places. We use the shortest length as the length of the blind.

To ensure correct operation and full black out performance the blind can only work within limited window reveal tolerances i.e. the window must be as square as possible, fitting a blind into or on the edge of a window recess outside of the stated tolerances will lead to poor operation, reduced black out performance and or product damage.

Minimum Size: 400mm width x 400mm length

Maximum Size: 1500mm width x 1500mm length

Blinds

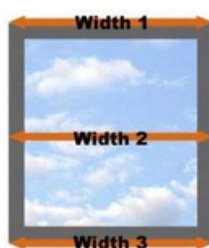
Blind #1

Width

width 1 (mm)

width 2 (mm)

width 3 (mm)

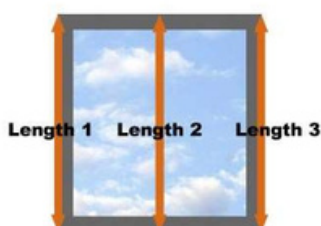


Length

length 1 (mm)

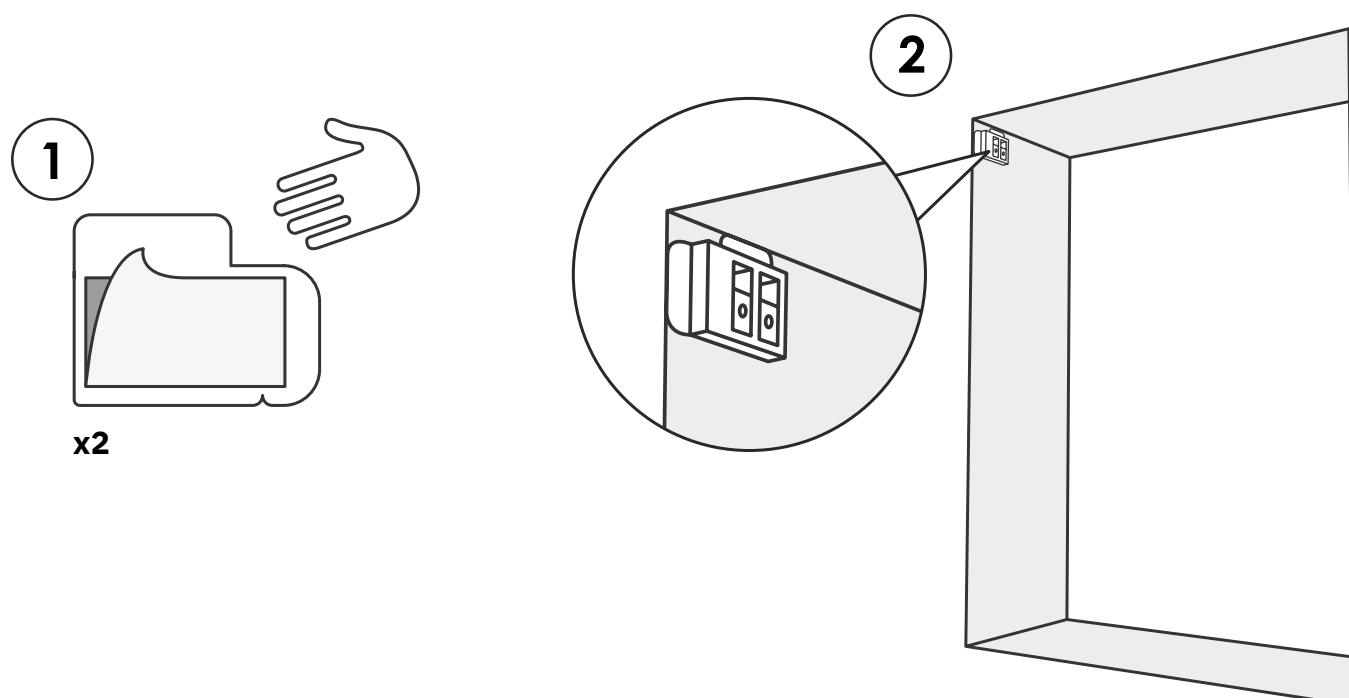
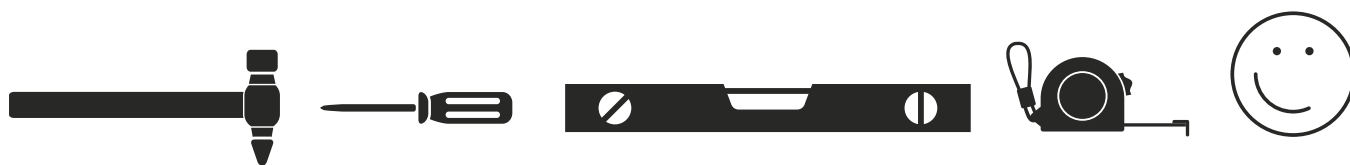
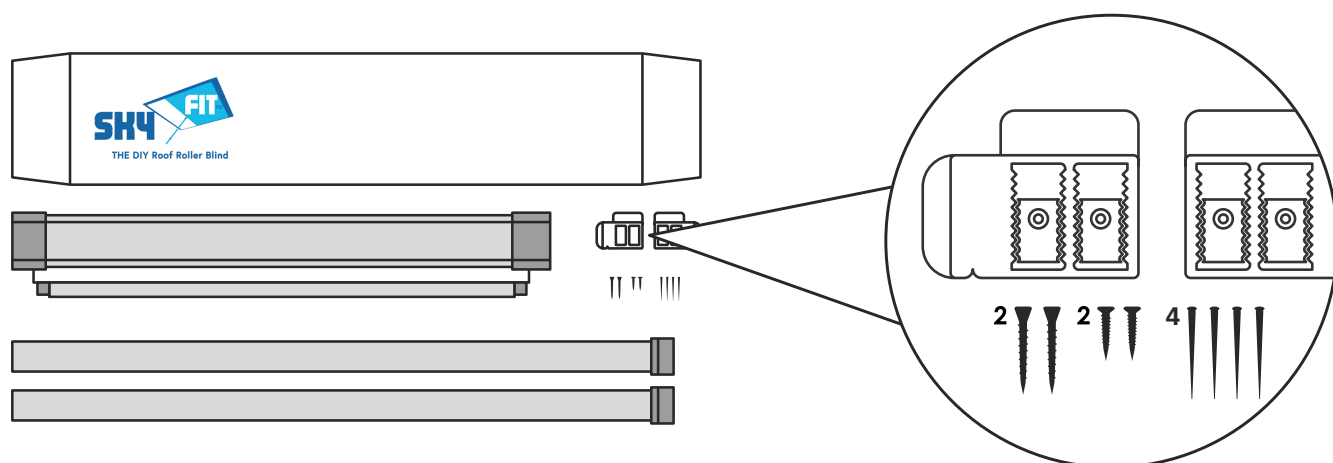
length 2 (mm)

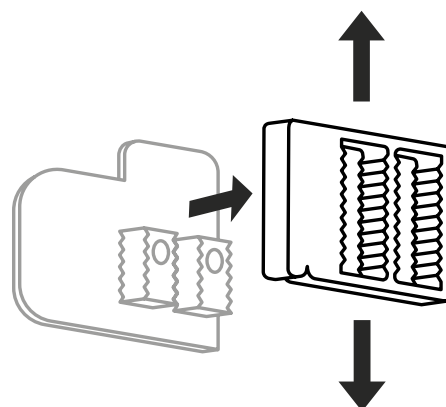
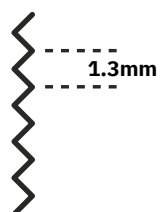
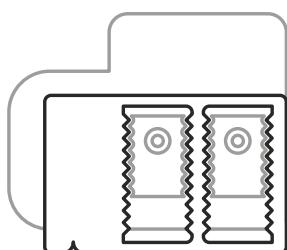
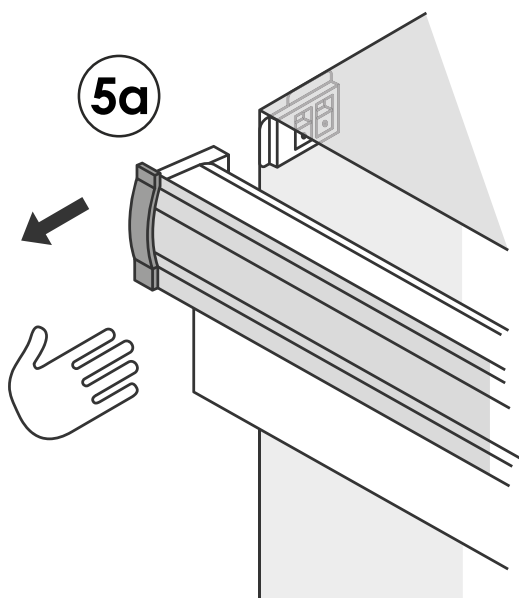
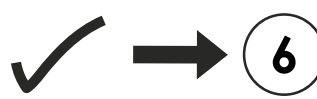
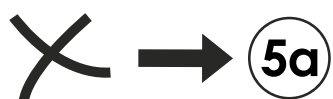
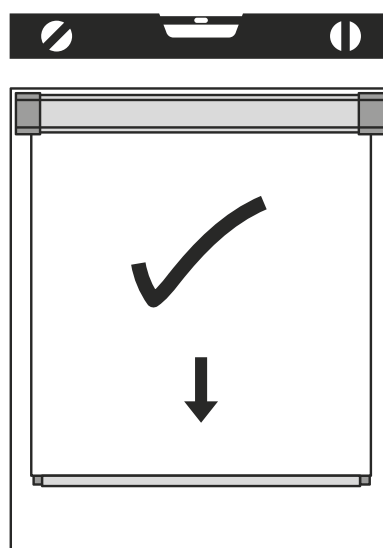
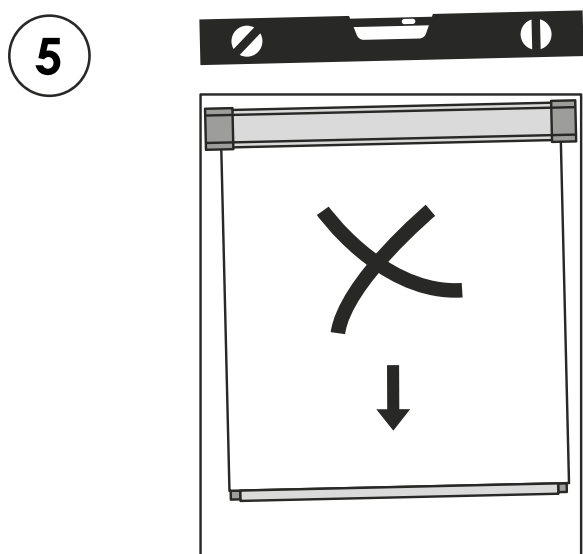
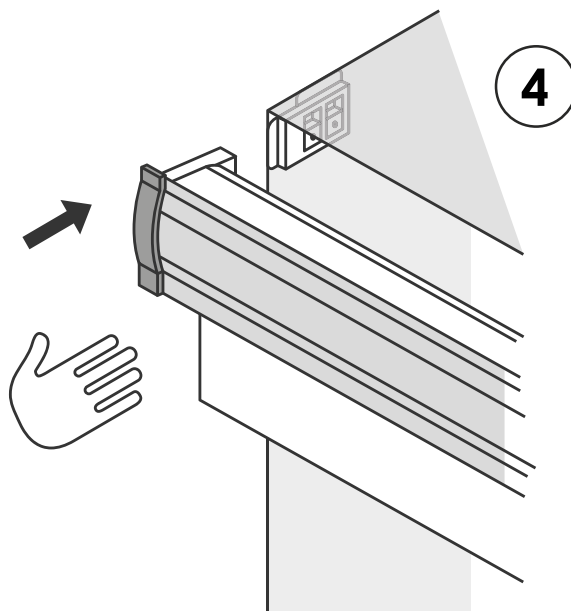
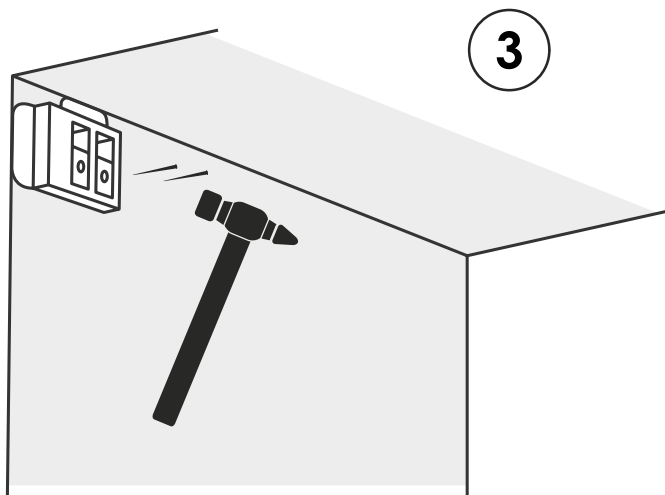
length 3 (mm)

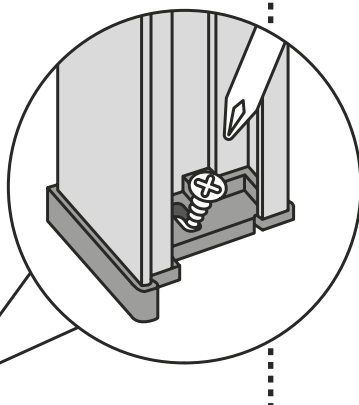
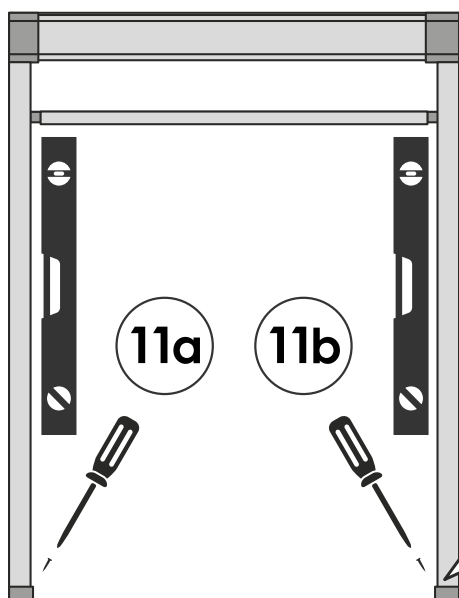
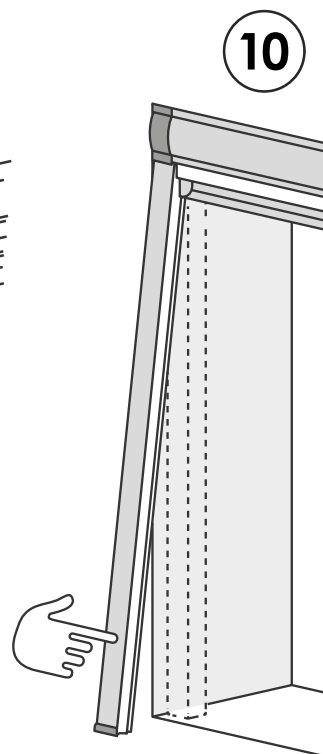
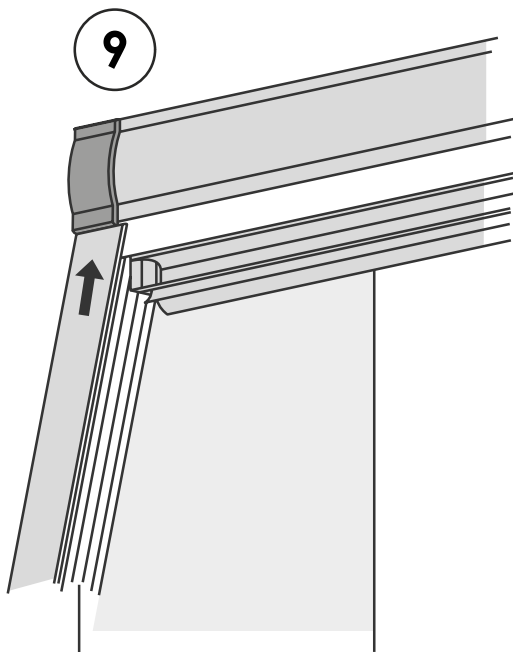
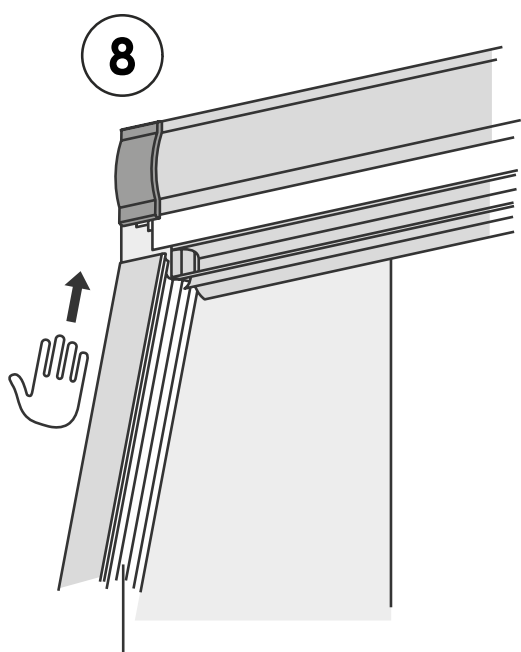
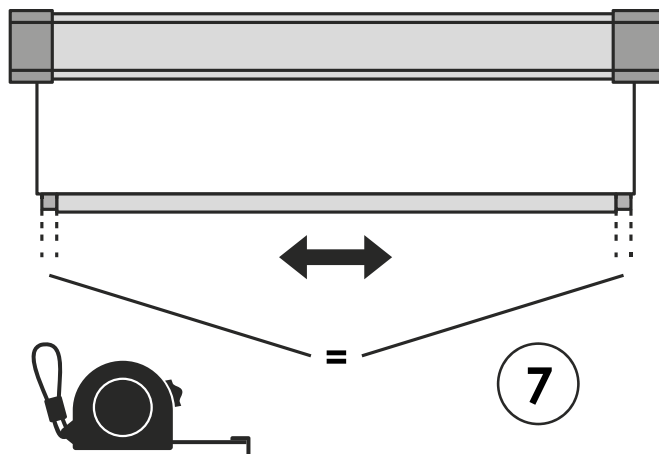
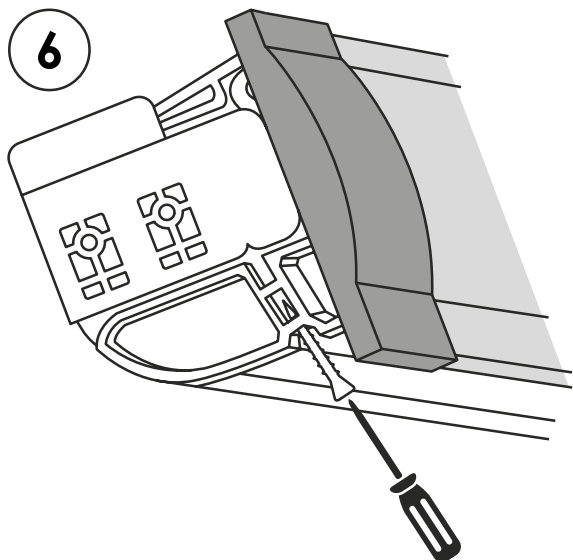


SkyFIT™ Manual Blind Fitting Instructions

[Link to fitting video](#)



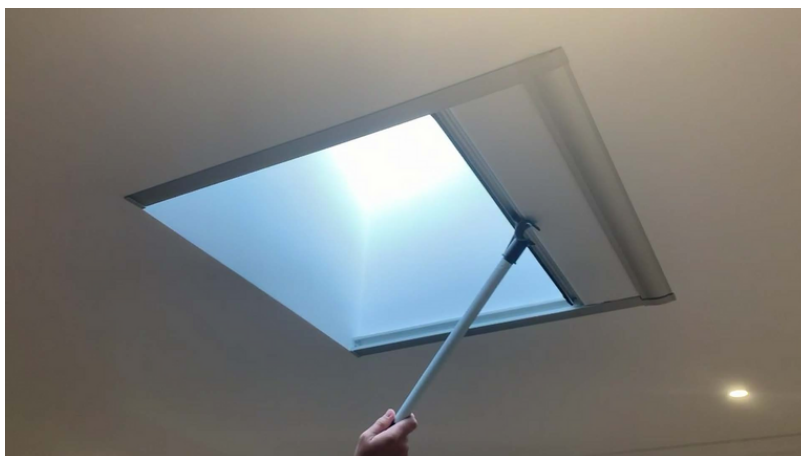
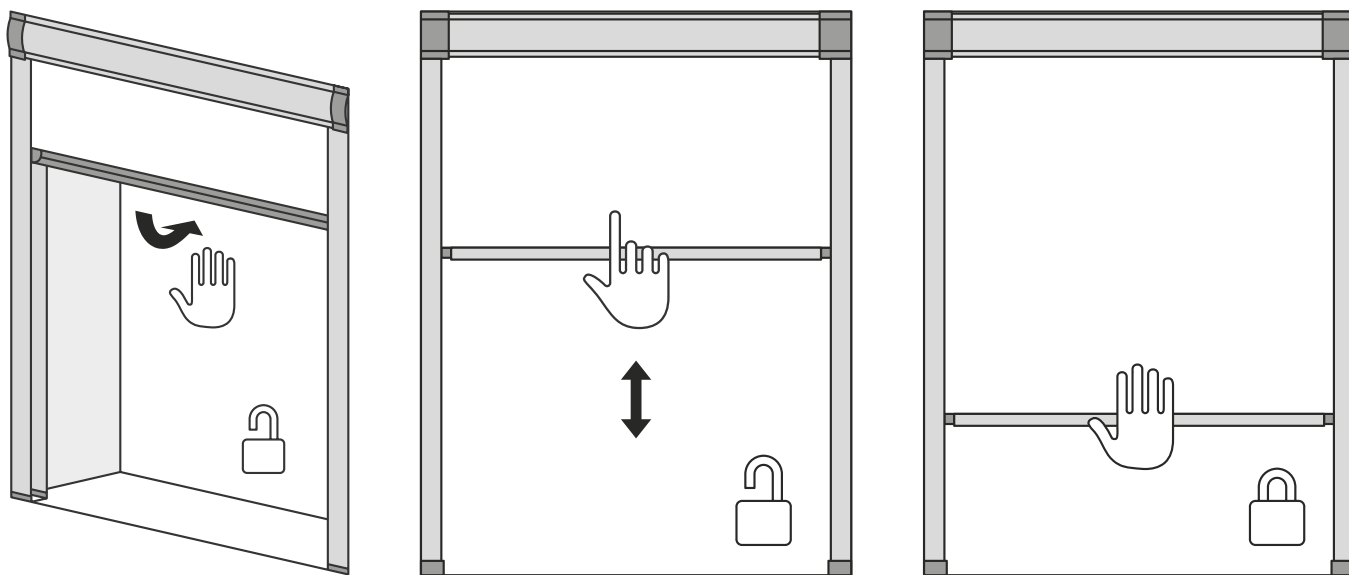




Top Tip:
You may want to put some
extra screws in equal spaces
down the side rails of the blind.

These screws are not provided.

Operation: By hand or pole (make sure you operate the blind in the centre)





www.skylight-blinds-direct.co.uk
Tel: 0800 008 6293 : Email: team@skylight-blinds-direct