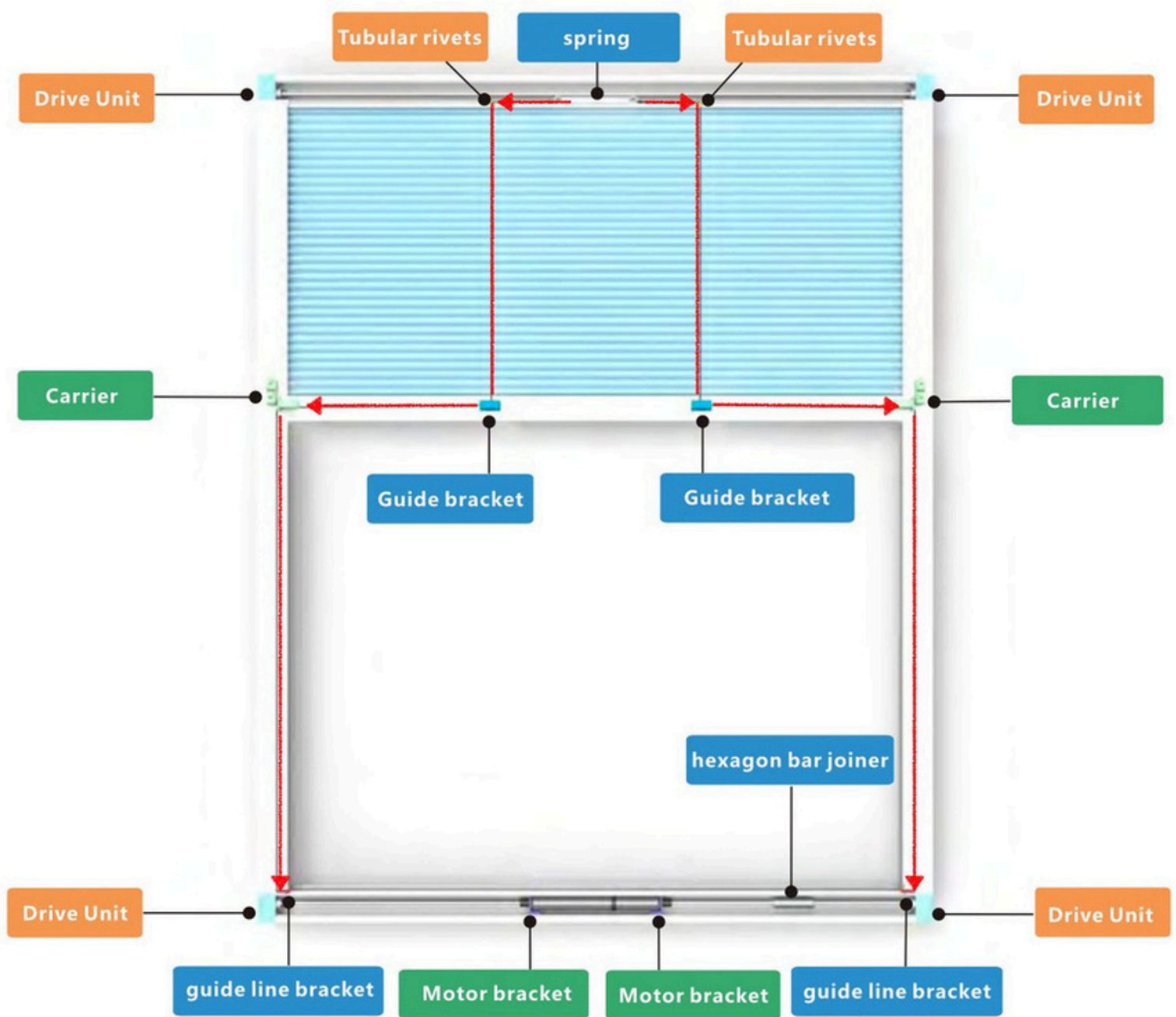
A hand holding a white remote control with a small antenna and two buttons, one labeled 'up' and one labeled 'down'. The background is a bright blue sky with scattered white clouds. A large, white, honeycomb-patterned blind is visible on the left side of the image, partially open, revealing the sky.

# Honeycomb Openview (Electric blind assembly guide)



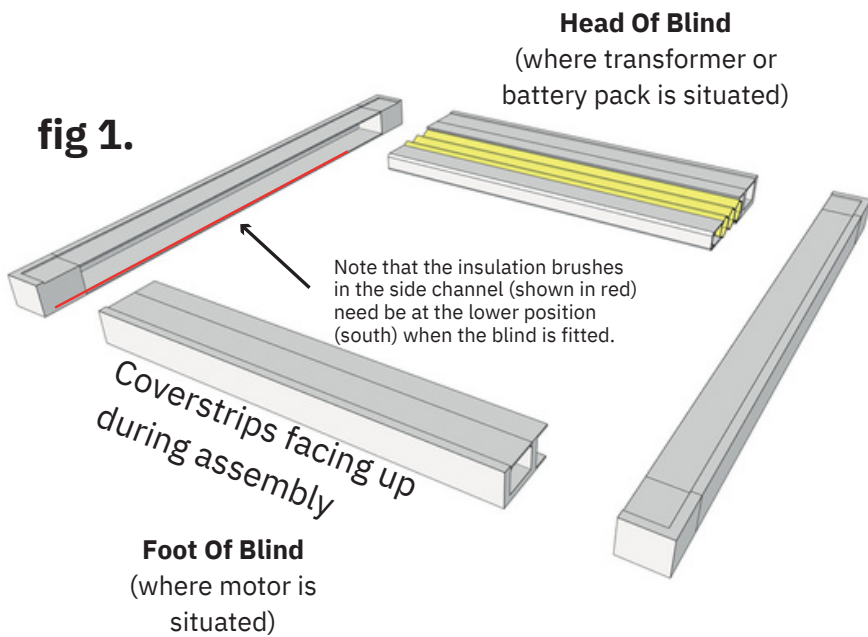
# Anatomy Of The Blind

Head Of Blind (where battery or transformer is hidden)



Foot Of Blind

# How To Assemble The Blind



Scan for assembly instructions  
or [click here](#)

Carefully unpack the blind and arrange the blind on the floor as shown in **fig 1**.

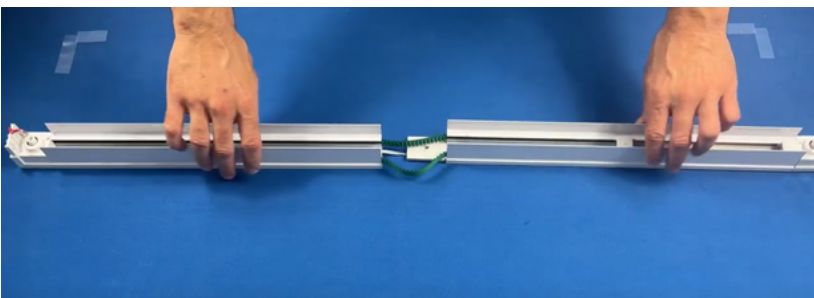
Next, watch this video to see how to assemble the blind before installation.

THE BLIND HAS NUMBERED LABELED STUCK ON TO IT.  
PLEASE MATCH UP EACH NUMBER TO THE MATCHING  
NUMBER EG 1-2, 2-2. IF THIS ISN'T DONE THE BLIND  
WON'T WORK

**Top Tip- test the blind on the floor before  
you fit it into your recess.**

## Joining The Side Channels

If your blind is over 2.9m long the side channels will come in 2 pieces (for ease of transit). Follow this video to join the side channels. If your blind is smaller than 2.9m move to the next step



[Scan for assembly instructions](#)  
or [click here](#)

## **Test The Blind On The Floor**

Before you install the blind in the sky it is recommended for you to test it on the floor to make sure it is working as you would like with the remote. The blind should be one touch to open and one touch to shut. Please drop us an email if it is not.

it is very likely that you will have to adjust the floating rail as the blind may be a bit wonky. Scan for instructions below for video on how to straighten the blind. This is easier done before fitting.



[Scan or click here](#)

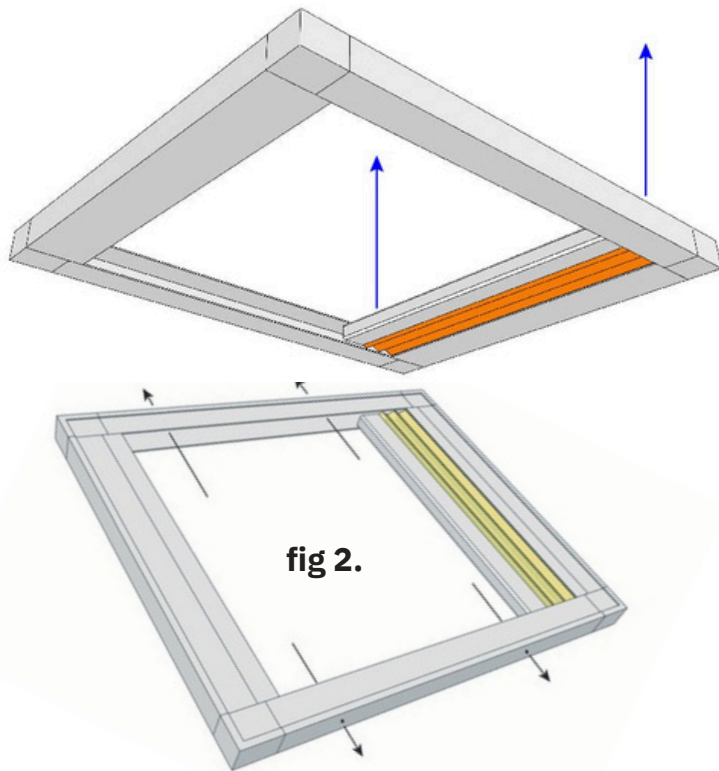
## Hassle-Free Installation: Pre-Drilled Holes for Convenient Mounting

**Positioning Your Blind:** Hold the blind in the desired place in the recess.

**Marking Drill Points:** While holding the blind steady, use a pencil to mark the wall through the pre-drilled holes in the frame. This will indicate the locations for drilling.

**Drilling:** Remove the blind and drill at the marked spots on your wall. Insert the appropriate rawlplugs into these holes.

**Securing the Blind:** Align the blind with the drilled holes and fix it securely in place.



When you install the blind we suggest that you fit the blind with the cover strips facing towards the sky for a streamlined look

Your blind will either have 4 or 6 pre-drilled holes in the side channels. These holes are used to side fix the blind into your recess. See **fig 2.**

The fixing does not have to be that tight, but it must be firm since it will hold the installation in place. After you've fitted blind into position, you may want to fill any gaps around the frame with caulk or silicone. Depending on which power option you've chosen you'll need to either connect the blind to 240v, or fit the solar panel and connect it to the blind.

If fitting a solar panel, simply position it somewhere where it will catch the light. Once the battery is fully charged, you can expect power to last up to four months. The solar panel simply needs to trickle charge the battery over time.

### **Tips for installing side rails joined with a jointer**

When installing a blind with a jointer. Take care to ensure that the side rail holes are lined up horizontally with each other to the mm, otherwise the blind will jump across the join.

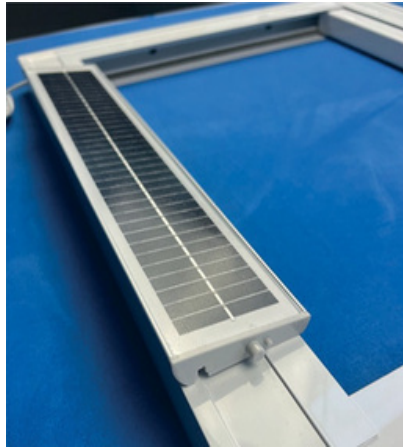
### **Tips for 'one-man' installation**

It's totally possible to fit Honeycomb Openview Electric blind on your own. It is lightweight, and needs only a few fixings. Therefore, you just need to find a way to hold the blind up whilst you secure the it in place.

A simple hack is to mark your 'level line' in the recess, and then hammer some thin nails into the plasterboard along this line at one end of the recess. You will then simply offer the blind up into the recess and sit it on top of the nails, whilst you make some preliminary fixings into the side channels at the other end of the blind.

# Electrics

## Battery Solar Powered Option

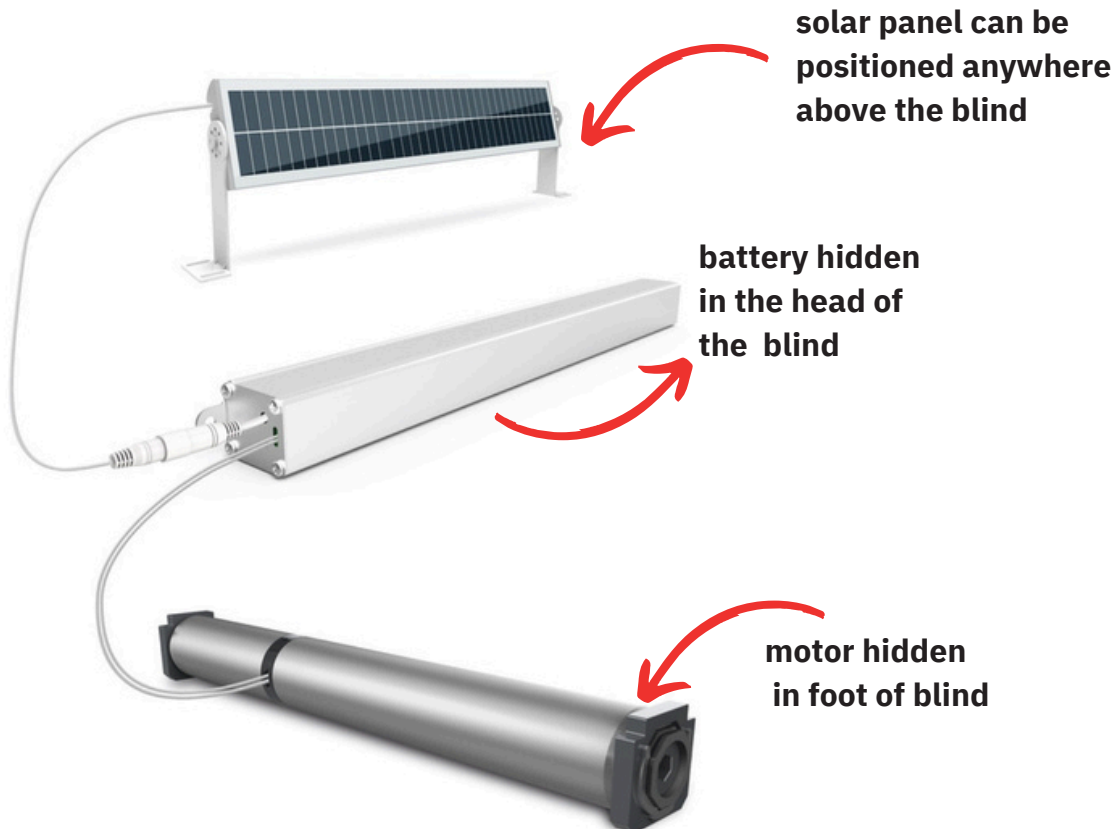


charging port



**Foot Of Blind**  
(where motor is situated)

The battery is hidden in the **head** of the blind. It comes pre charged. It is trickle charged by a solar panel which you sit on the top of the blind. Every now and then you should attach the blind to the charger provided to give the blind a charge. The charging port is discrete and on the underside of the blind. There is another charging port above the blind for the solar panel. The solar panel cable is approx 2.5mts long, so you could locate the solar panel in almost any position, however, it's quite wise to locate it in a position where it will collect the most light.



**solar panel can be positioned anywhere above the blind**

**battery hidden in the head of the blind**

**motor hidden in foot of blind**

Our blinds come with the NOVO motor as standard and Somfy motor if requested. These instructions are geared towards the novo motor but the Somfy motor works on the same principles and should be similar to set up



# Electrics

## Mains Powered Option

Transformer



Head Of Blind



Foot Of Blind  
(where motor is  
situated)

The mains transformer is hidden away in the head box at the fabric end of the blind. After the initial assembly, leave the cover off, or simple remove it if it's already fitted.

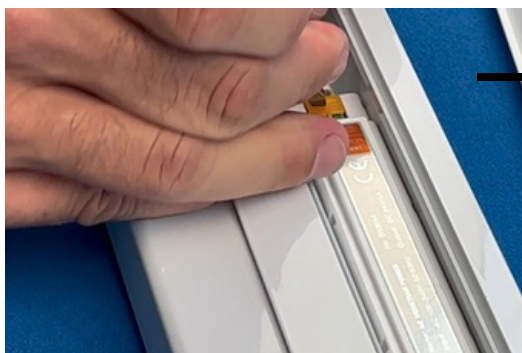
To remove it, we suggest a flat blunt tool Cable Exit Position such as a filler knife rather than a screwdriver. Be sure not to bend the cover when removing it. It just needs some agitation rather than brute force to remove it. Use a flat head screwdriver to push the yellow terminal springs in the direction shown. This will open the cable hole giving you enough space to push your power cable into the port. Release the terminal springs to lock the cable in place. Fit the cover strip profile into place when done.

**Your AC 240v cable goes into the INPUT side of the transformer.**

**The + terminal is LIVE The - terminal is NEUTRAL**

**A 0.75mm twin-core flex cable is more than adequate for the installation. The transformer is 'double insulated', it doesn't have an earth connection.**

[Scan for assembly instructions](#)  
[or click here](#)



**Our blinds come with the NOVO motor as standard and Somfy motor if requested. These instructions are geared towards the novo motor but the Somfy motor works on the same principles and should be similar to set up**

## Handsets

### Remote Control

Connect up to 6 blinds with this handset



### Switch

This single channel switch is a remote transmitter and doesn't need cables. Simply screw it to the wall. Only compatible with the mains powered motor.



**Our blinds come with the NOVO motor as standard and Somfy motor if requested. These instructions are geared towards the novo motor but the Somfy motor works on the same principles and should be similar to set up**



# **TROUBLE SHOOTING**

## **Problem: The blind isn't working with the remote**

use the remote to scroll to channel 6, and then go one channel past channel 6. This is the group channel and all the lights on the remote should light up when you are on this channel.

Does the blind now work?

If not please check the power to the blind. If it is a battery powered blind please make sure that the power is properly attached to the blind. If it is a mains powered blind please make sure the powered is connected properly to the blind

If this does not work please email us with a description of the problem to  
**[team@skylight-blinds-direct.co.uk](mailto:team@skylight-blinds-direct.co.uk)**

## **Blind is pulling over wonky- did you fit the L brackets?**

Did you fit the L brackets down the side channels? (you will find these in the packaging if your blind has a join down the side channels). The L brackets are already installed if your side rails are not in 2 x parts.

Rewatch this video



## **Blind is pulling over wonky- adjust rods**



Watch this video

## **Problem: Blind doesn't shut properly**

If the blind does not completely close or stops short of the closing position, then the motor limits should be reset.

Sometimes is possible that the motor limits are no longer in sync if you have built the blind and then disassembled it.

### **RESET THE MOTOR LIMITS**

1. Open the blind fully
2. Physically hold the float rail securely so as to stop it moving (you are about to hit the close button!).
3. Press the button on the transmitter that would normally close the blind.
4. You will feel a slight 'jog' on the float rail. The motor limits have been erased.
5. Now press the close button agains and let the blind run to the end. When the motor detects an obstruction, it will stop and set that position as the final limit

**For any other problems please email [team@skylight-blinds-direct.co.uk](mailto:team@skylight-blinds-direct.co.uk)**